



EIROPAS SAVIENĪBA

Project Nr. 2011/0003/2DP/2.1.1.1.0/10/APIA/VIAA/041



EIROPAS REĢIONĀLĀS
ATTĪSTĪBAS FONDS

Moisture Risks in Multi-layered Walls - Comparison of COMSOL and WUFI®PLUS Models with Experimental Results

Ansis Ozolins^{1*}, Andris Jakovics¹, Janis Ratnieks¹

¹Laboratory for Mathematical Modeling of Technological and Environmental
Processes, University of Latvia

*ansiso@inbox.lv

Main goal

Estimating risks of mould growth under Latvian climate conditions using 3 different approaches:

- experimental results in real test houses
- software WUFI®PLUS (3D model)
- COMSOL (1D model)

Governing equations

Heat transfer

$$\frac{\partial}{\partial x} \left(\lambda \frac{\partial T}{\partial x} \right) + h_v \frac{\partial}{\partial x} \left(\delta_p \frac{\partial (\varphi P_{sat})}{\partial x} \right) = \rho_s (c_s + w c_w) \frac{\partial T}{\partial t}$$

Moisture transfer

$$\frac{\partial}{\partial x} \left(D_\varphi \frac{\partial \varphi}{\partial x} \right) + \frac{\partial}{\partial x} \left(\delta_p \frac{\partial (\varphi P_{sat})}{\partial x} \right) = \rho_s \frac{dw}{d\varphi} \frac{\partial \varphi}{\partial t}$$

Variables: temperature and relative humidity

$$T(t, x), \varphi(t, x)$$

see “Simultaneous Heat and Moisture Transport in Building Components.” (Kunzel, H.M.) for details

Test stands of houses

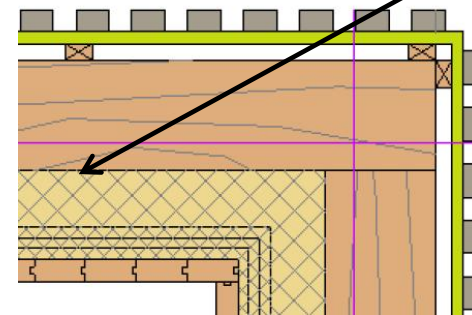
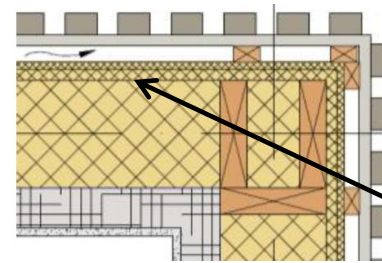


Five test stands was built for the first time in Riga, Latvia. These test stands can help to analyse moisture risks in a multi-layered wall since moisture can negatively influence building's sustainability and human health



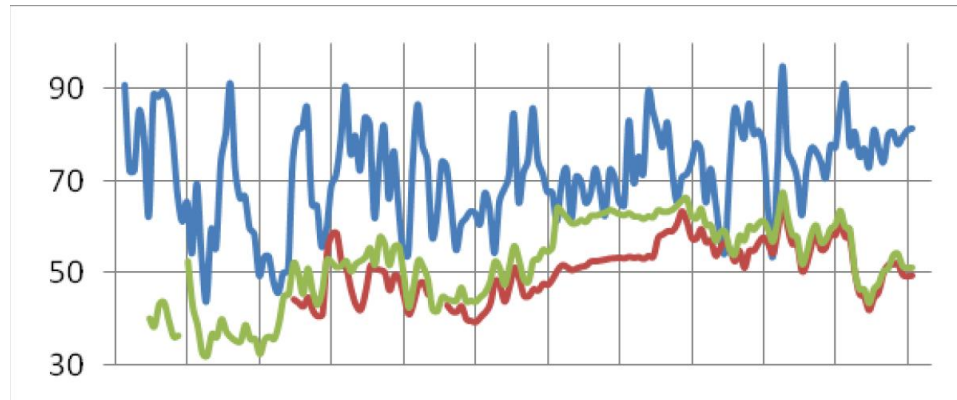
Description of building construction walls

<i>Test stands</i>	d m	λ W/(m·K)	μ [-]
Stand of plywood panels			
Outside			
Plywood	0.02	0.17	700
Mineral wool	0.2	0.036	1
Plywood	0.02	0.17	700
Fibrolite	0.075	0.068	2
Lime plaster	0.015	0.7	7
Stand of wooden logs			
Outside			
Wooden logs	0.2	0.13	130
Mineral wool	0.2	0.036	1
Wooden log	0.04	0.13	130

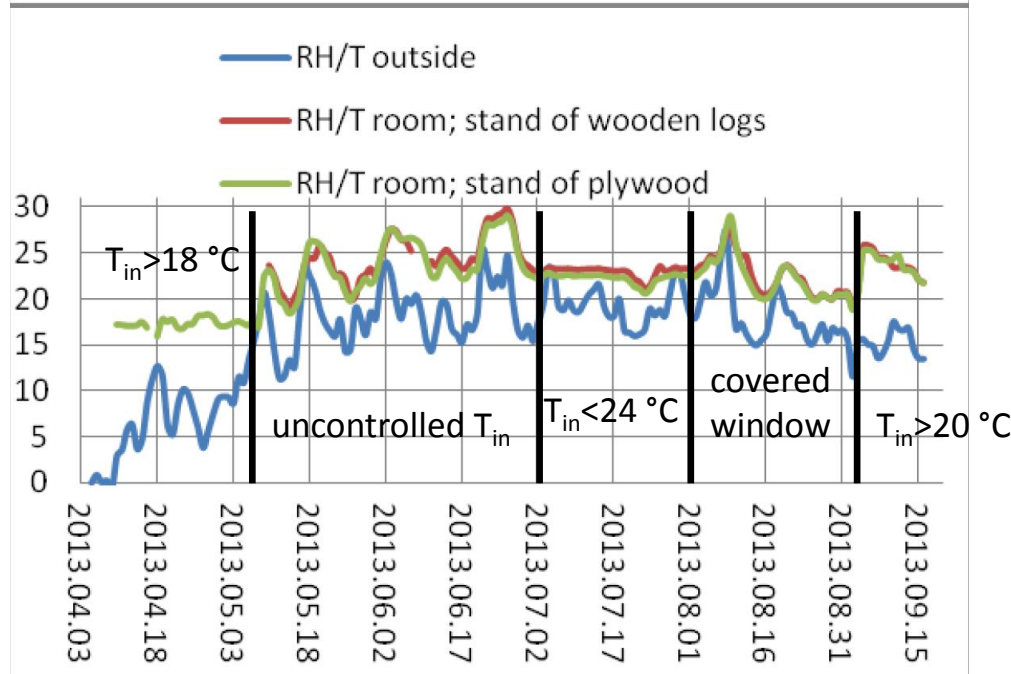


critical places

Outside and inside climate



Different room climate were ensured: uncontrolled indoor temperature, heating, cooling, covered windows. Indoor relative humidity has been fluctuated for free floating conditions all the time period



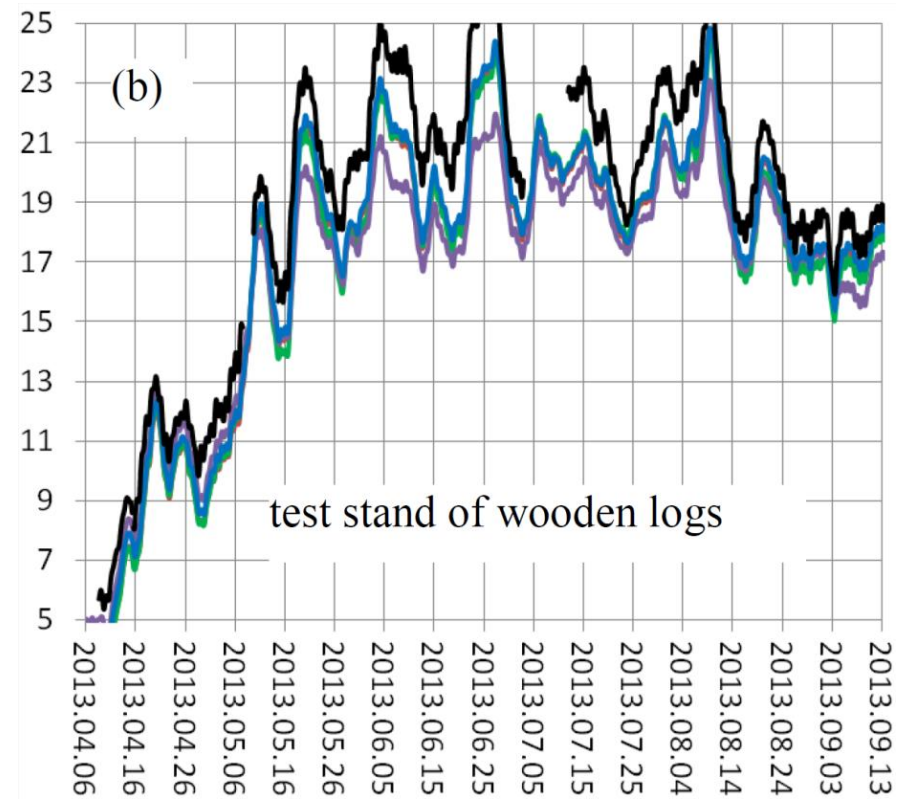
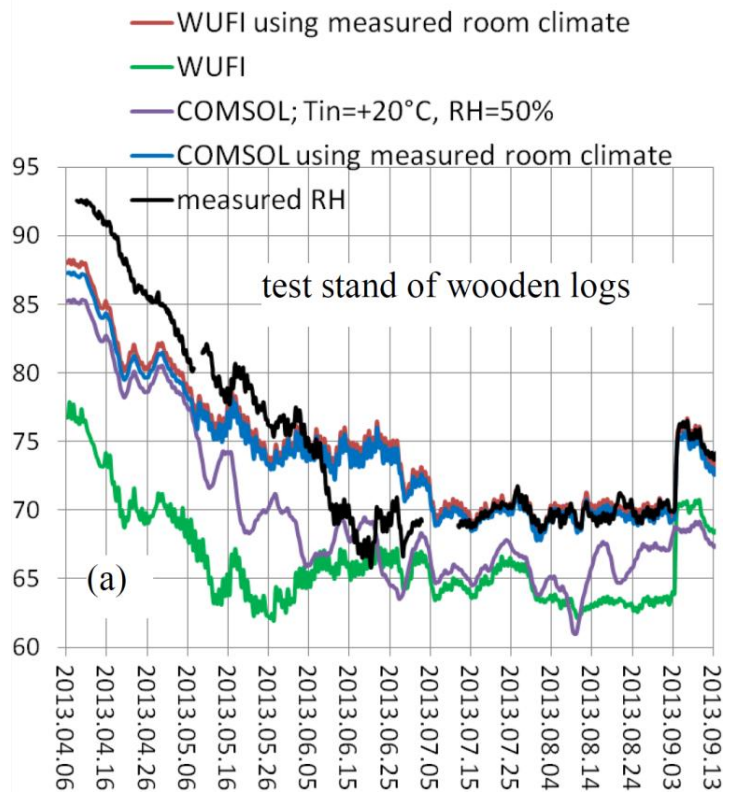
daily average relative humidity and temperature

Obtaining indoor climate

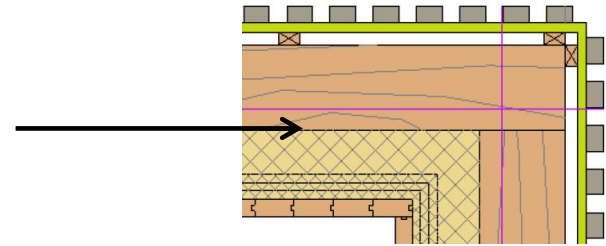
Several approaches were used for estimating room climate :

- measured indoor relative humidity and temperature (WUFI[®]PLUS, COMSOL)
- calculated φ_{in} and T_{in} (WUFI[®]PLUS)
- constant φ_{in} and T_{in} (COMSOL)

Moisture risks for the test stand of wooden logs

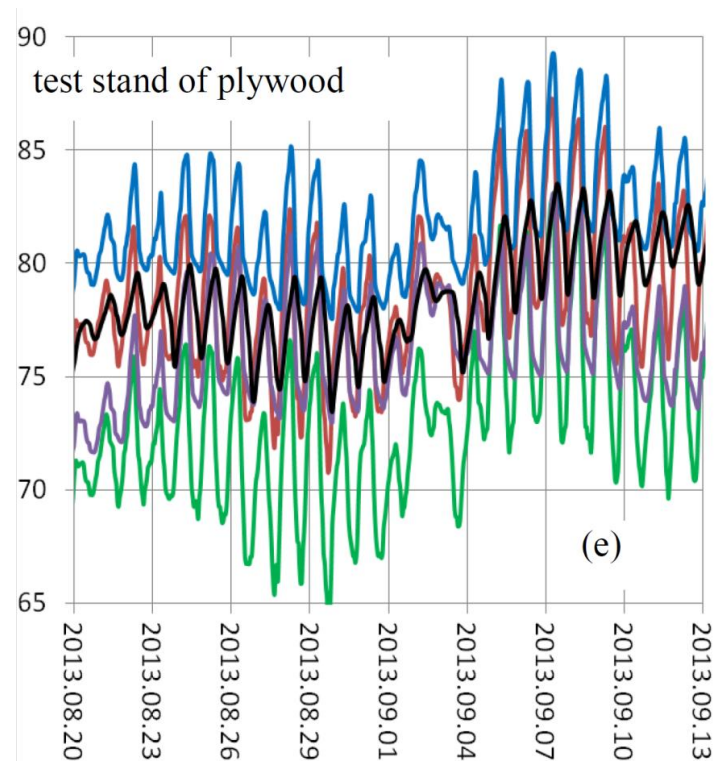
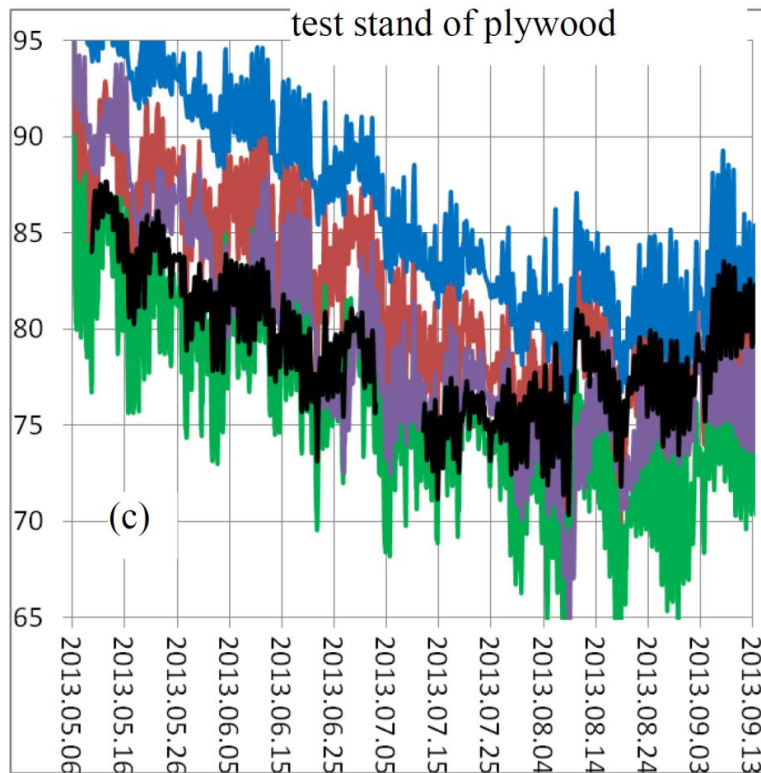


Critical place

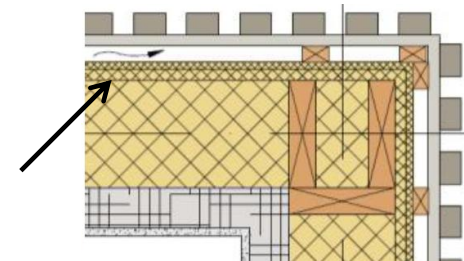


Moisture risks for the test stand of plywood

- WUFI using measured room climate
- WUFI
- COMSOL; $T_{in}=+20^{\circ}\text{C}$, $\text{RH}=50\%$
- COMSOL using measured room climate
- measured RH



Critical place



Conclusion

- Simple 1D model, implemented in COMSOL Multiphysics, works well for estimating mould growth risks in a multi-layered building constructions.
- If high risks of condensate formation in a construction could also occurs, WUFI PLUS shows better results in a comparison with measured results.

Further works

- The comparison of measurements with thus obtained by WUFI[®]PLUS and COMSOL Multiphysics for a longer time period.
- Coupled heat and moisture simulations using 2D and 3D model implemented in COMSOL Multiphysics



EIROPAS SAVIENĪBA

Project Nr. 2011/0003/2DP/2.1.1.1.0/10/APIA/VIAA/041



Thanks for attention!