

# The Spiral RF MEMS Switch in COMSOL Multiphysics

K.M Vinayaka Swamy, G Ravi Prakash, B G Sheeparamatti  
 Department of Electronics and communication  
 Basaveshwar Engineering collage, Bagalkot, Karnataka, India

**Introduction:** To develop electrostatically actuated spiral switch, which can be actuated at lower voltages as compared to conventional RF MEMS switches by using serpentine structure. The proposed design is capable of producing better deflections for lower voltages

**Results:** From the simulation result it is observed that as the number of serpentine structure increases the electrostatic deflection increases.

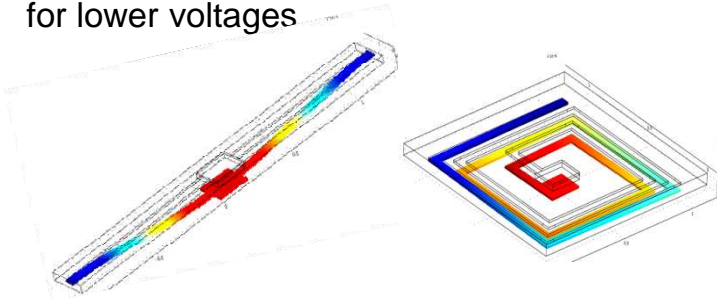


Figure 1 Plate suspended by two anchors

Figure 2. Serpentine switch

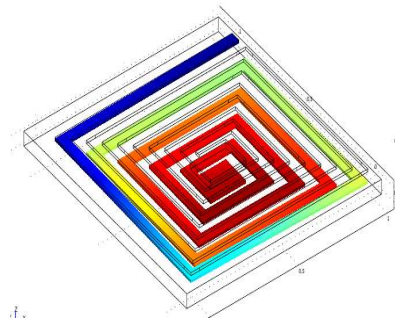
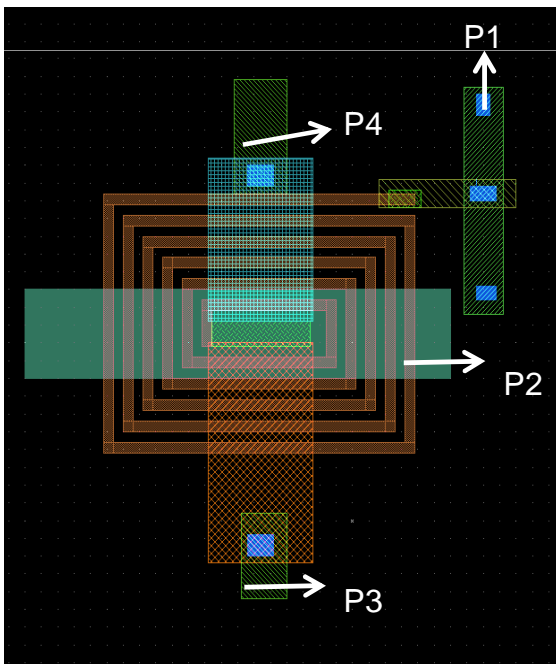


Figure 3. Proposed switch in COMSOL showing displacement

## Design of Spiral switch:



P1 is input voltage pad ('5' volts)  
 P2 is grounded pad  
 P3 is Signal input pad  
 P4 is Signal output pad

Figure 3. Electrostatically actuated spiral RF MEMS switch in Layout Editor showing CPW.

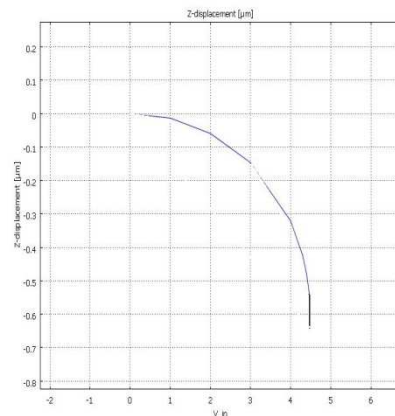


Figure 4. Title of the figure

**Conclusions:** The serpentine structure is suitable for low actuation switch is modeled and simulated in COMSOL. This developed switch has pull-in voltage compared to other two geometries as shown in Figure 1, 2 and 3.

## References:

1. Stephen D. Senturia, "Microsystem Design", *Kluwer Academic Publishers*, 2001
2. Kamal Jit Rangra. "Electrostatic Low Actuation Voltage RF MEMS Switches for Telecommunications". International Doctorate School in Information and Communication Technologies DIT - University of