



Presented at the COMSOL Conference 2008 Hannover

# Photonic/Plasmonic Structure from Metallic Nanoparticles in Glass

Institut für Physik  
Martin-Luther-Universität  
Halle-Wittenberg

**O. Kiriyyenko**

W. Hergert

S. Wackerow

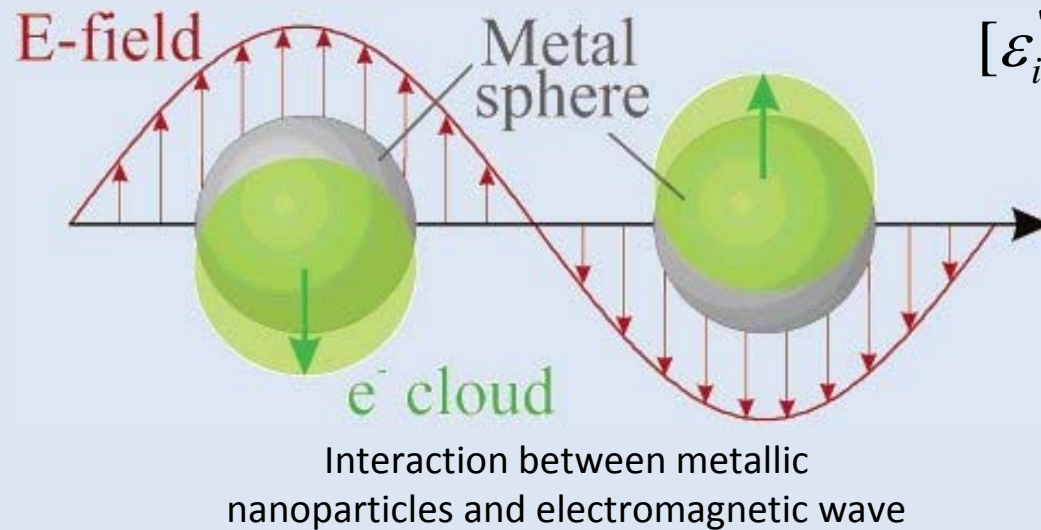
M. Beleites

H. Greaner

# Outline

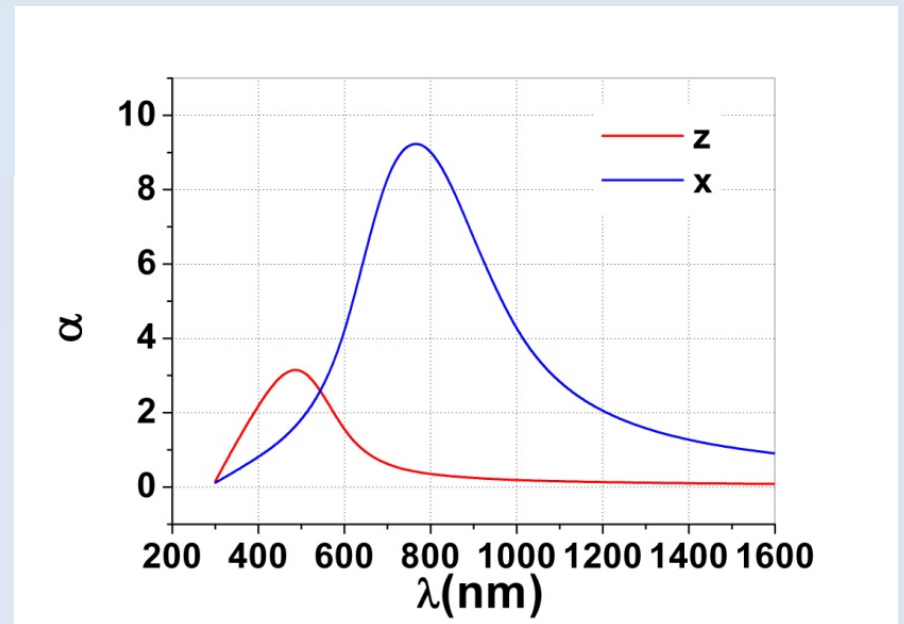
- ❖ Optical properties of metallic nanoparticles
- ❖ Fabrication of plasmonic structures
- ❖ Effective medium theory
- ❖ Application of EMT
- ❖ Conclusion

# Optical properties of metallic nanoparticles

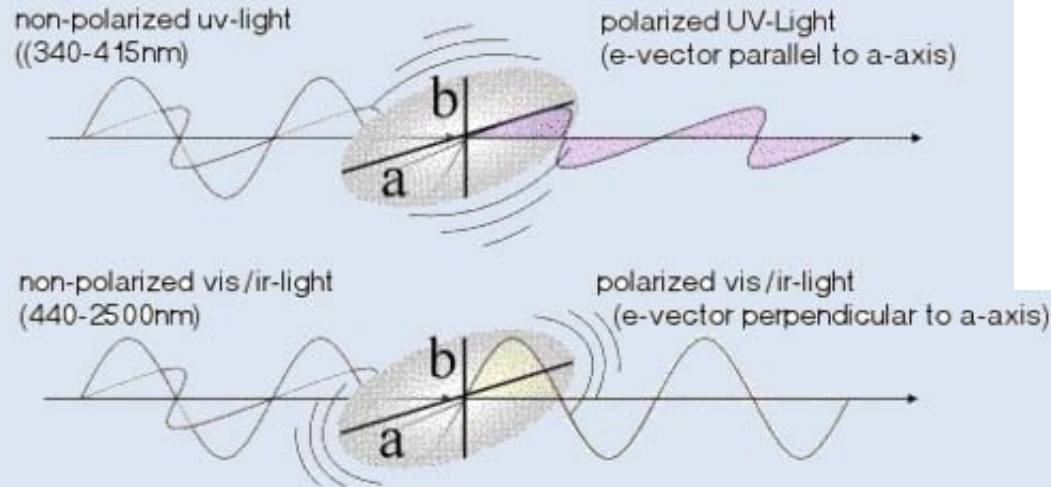


$$[\epsilon'_i(\omega_{SP}) + 2\epsilon_h]^2 + \epsilon''_i(\omega_{SP})^2 \rightarrow \text{Min}$$

Surface plasmon resonance



Extinction as function of wavelength

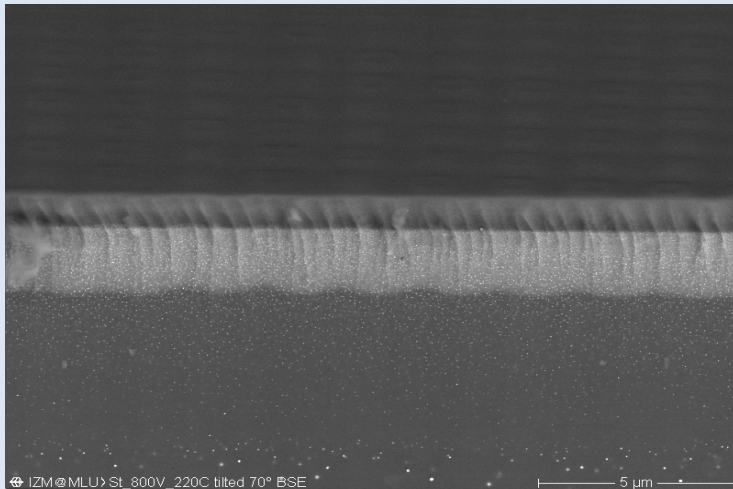


Metallic nanoparticles as a polarization system

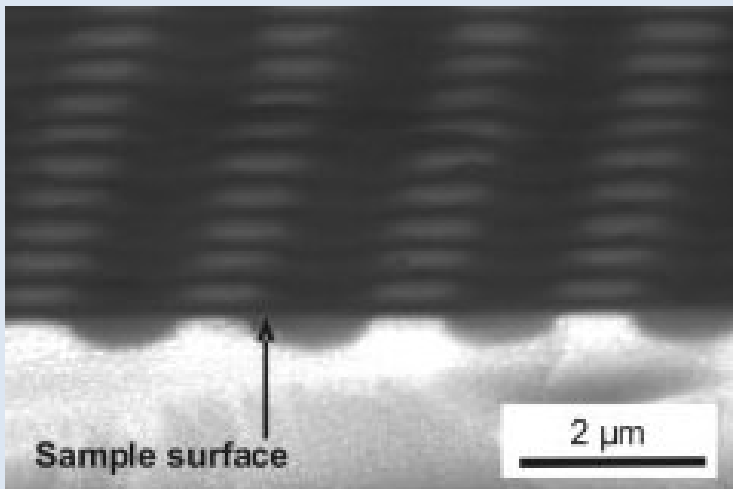
<http://www.codixx.de/>

$$\alpha = \frac{2\pi}{\lambda} \text{Im} \sqrt{\epsilon_{eff}(\lambda)}$$

## Fabrication of plasmonic structure

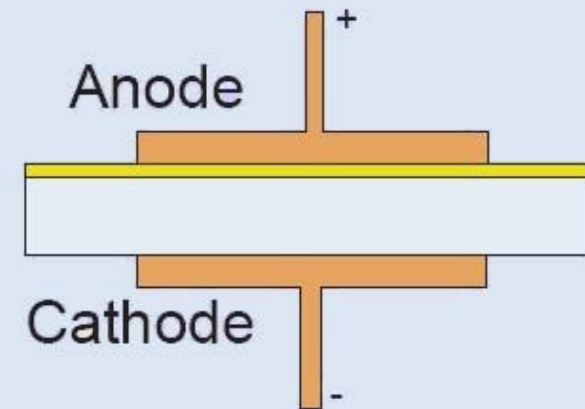


Layer of silver nanoparticles in glass

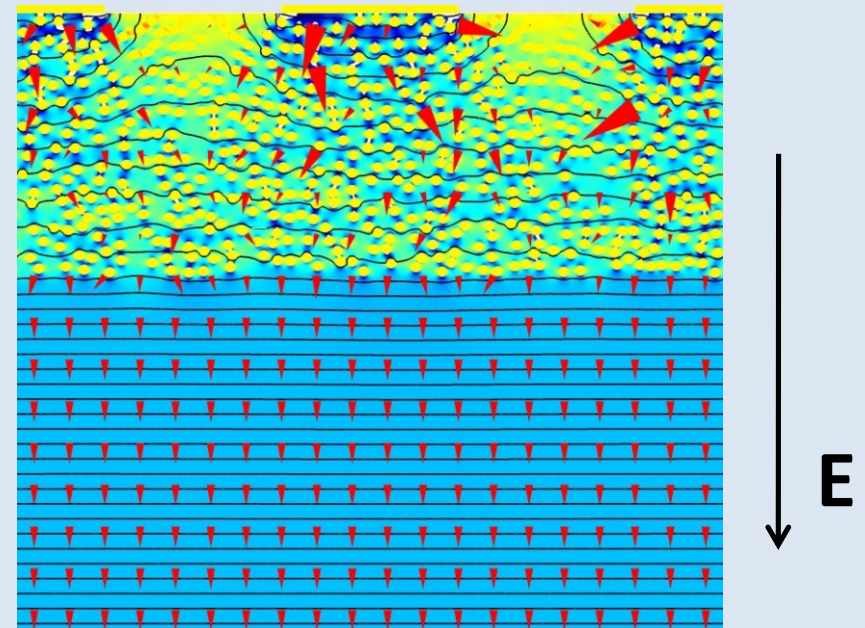


Experimental plasmonic structure, produced by electric-field-assisted dissolution method

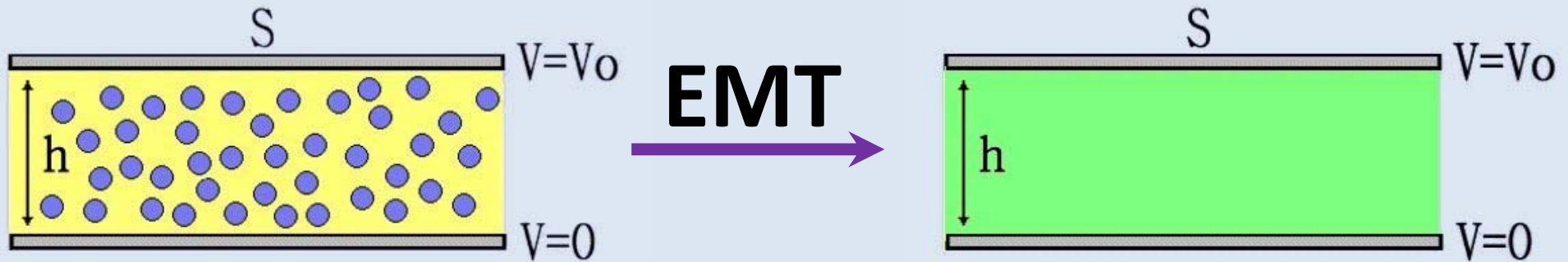
$$f = \frac{V_{inclusions}}{V_{bulk}}$$



Patent: WO/2005/102951



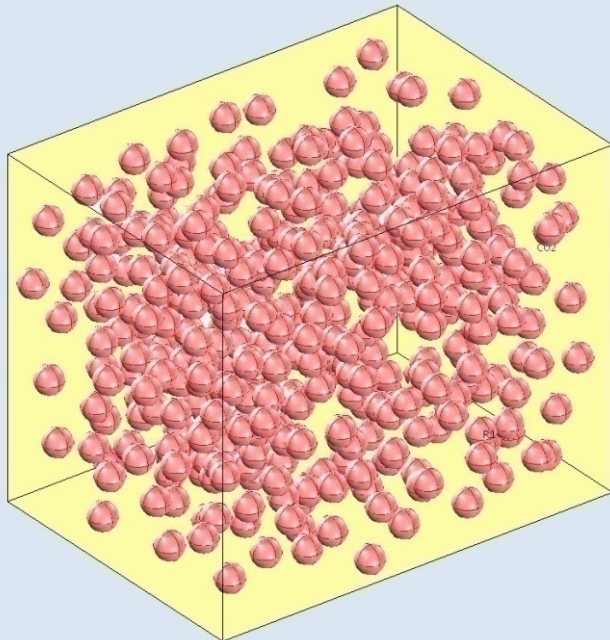
Distribution of electric field between anode and cathode. Calculated by Comsol Multiphysics



$$W = \frac{1}{2} \epsilon_0 \int_V \epsilon(\vec{r}) [\nabla \phi(\vec{r})]^2 d^3 r$$

$$W = \frac{1}{2} \epsilon_0 \epsilon \frac{S}{h} V^2$$

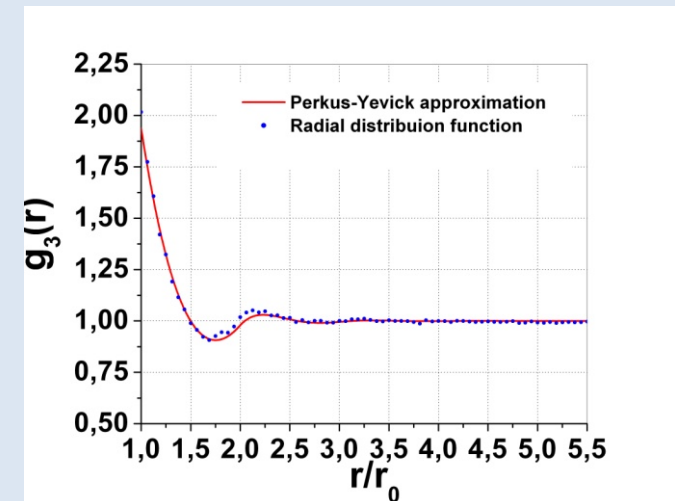
$$\nabla \cdot [\epsilon(\vec{r}) \nabla \phi(\vec{r})] = 0$$

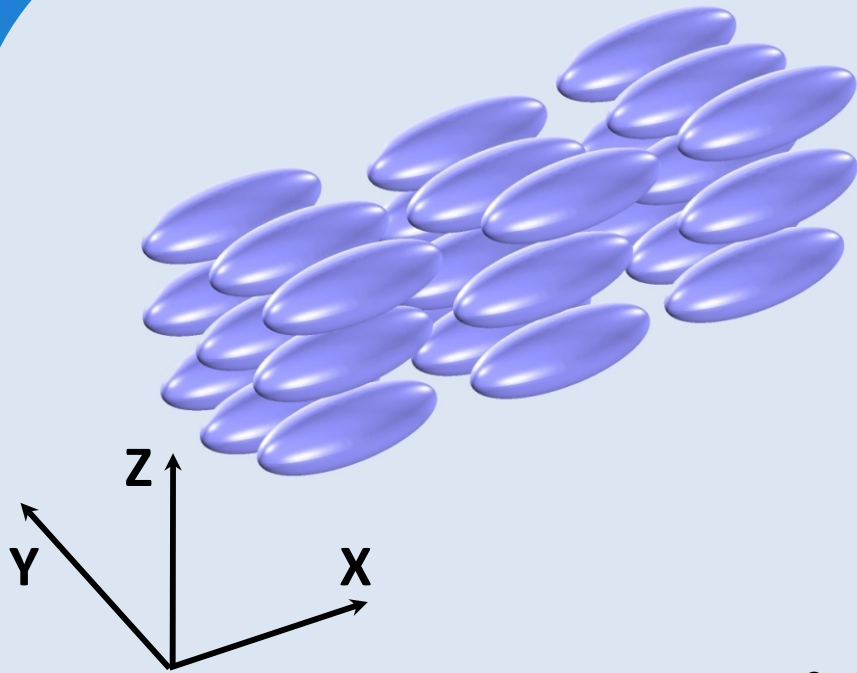


Equal distribution of nanoparticles in glass

Algorithm from molecular physics for equal distribution

Radial distribution function for the ensemble of nanoparticles.

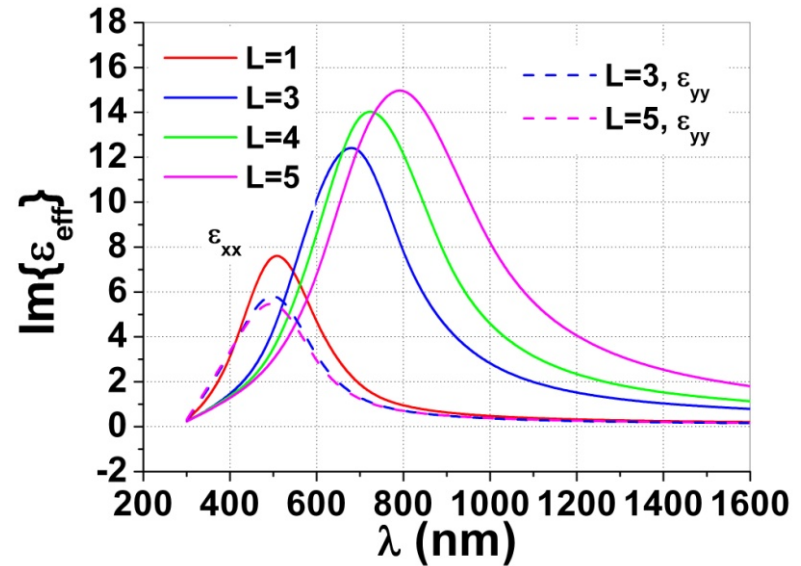
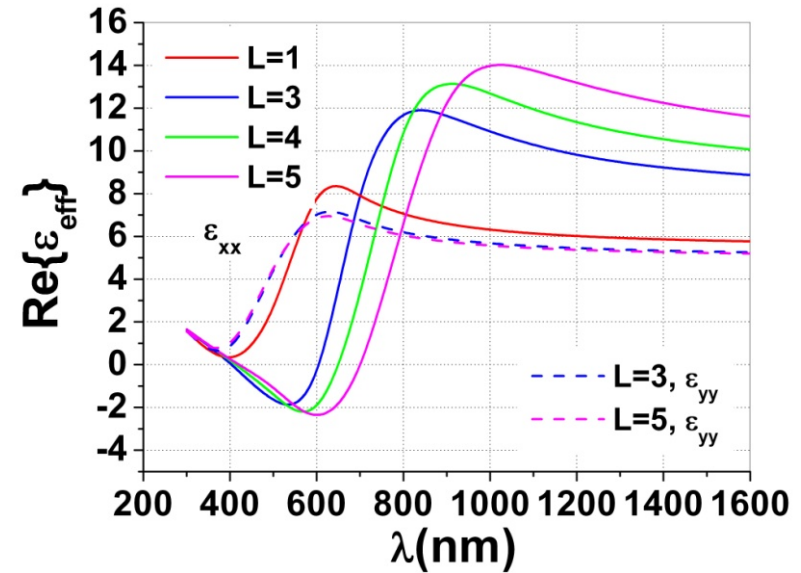




$$\epsilon_{sph} = \epsilon_b + 1 - \frac{\omega_p^2}{\omega^2 + i\gamma\omega}$$

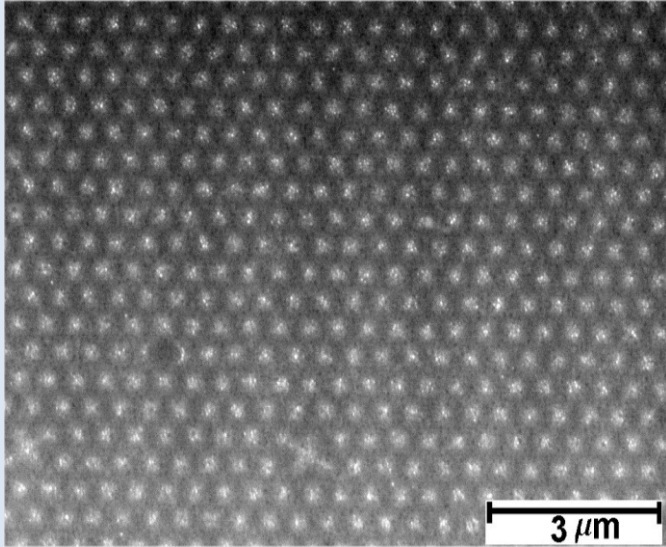
$$L = \frac{a_x}{a_y}, a_y = a_z$$

$$\epsilon_{eff} = \begin{pmatrix} \epsilon_{xx} & 0 & 0 \\ 0 & \epsilon_{yy} & 0 \\ 0 & 0 & \epsilon_{zz} \end{pmatrix}$$

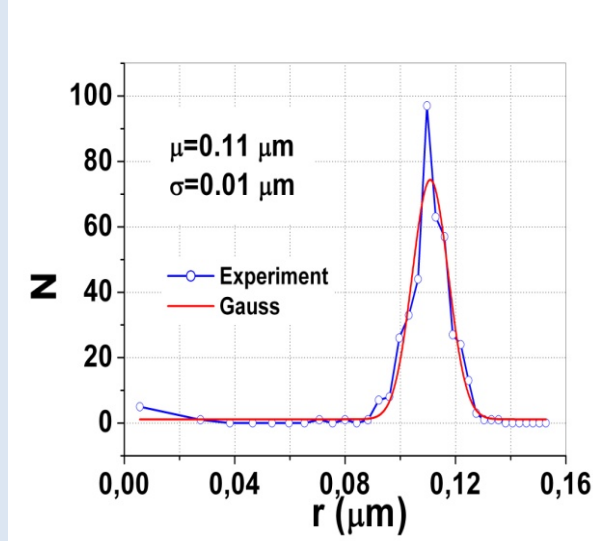


All calculations were made for  $f=0.3$

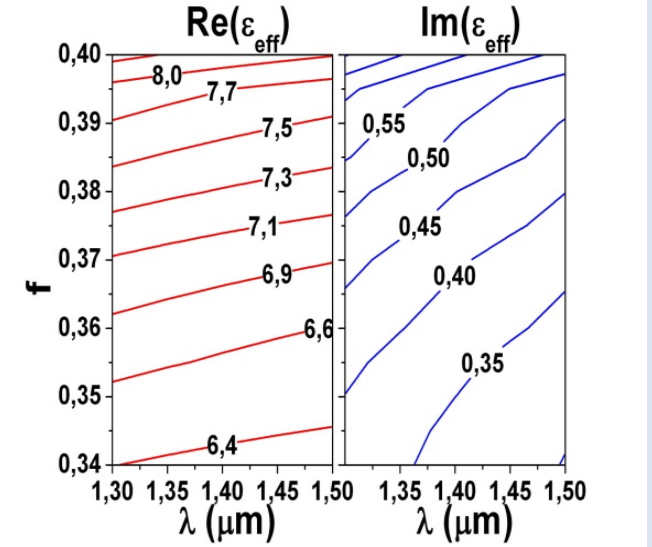
# Application of EMT



Experimental sample

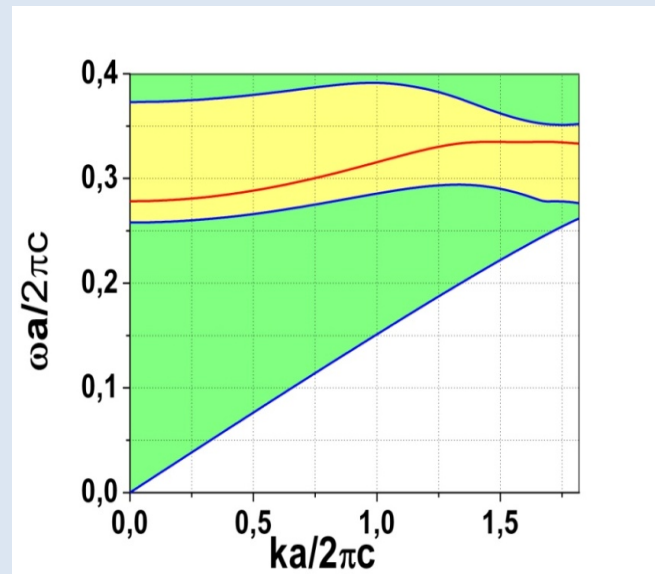
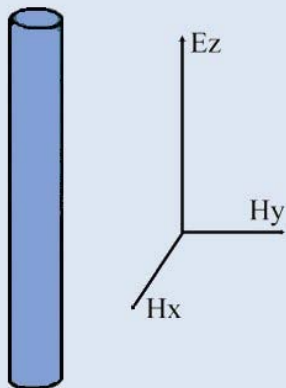


Distribution for radii

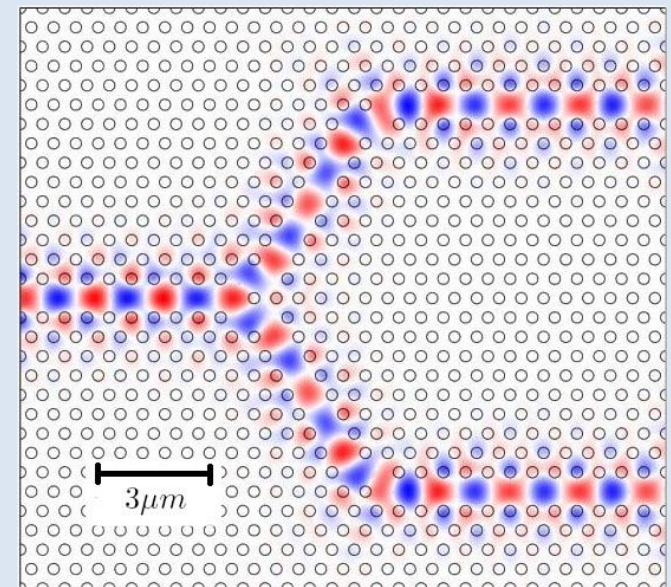


Filling factor

TM mode

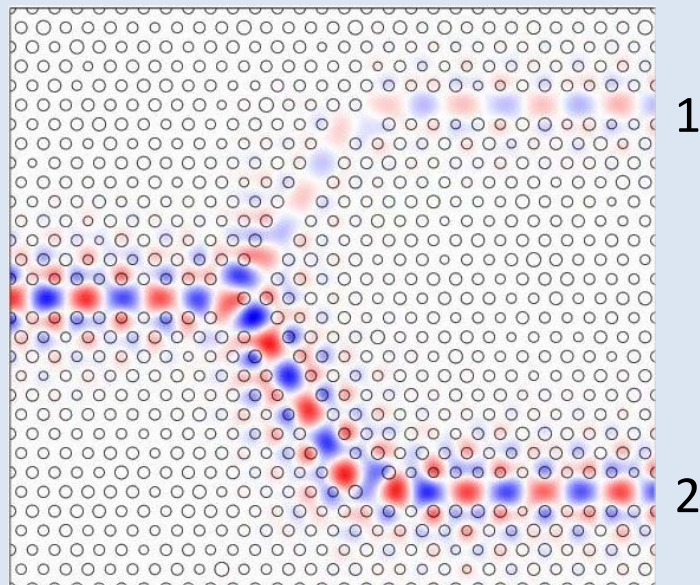


Band structures for the linear waveguide

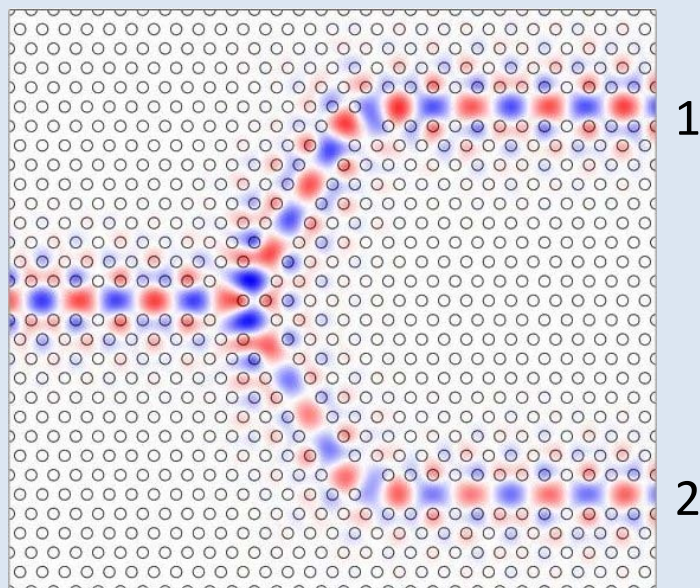


Ideal Y waveguide. Distribution of  $E_z$

$$\lambda = 1,45 \mu m$$

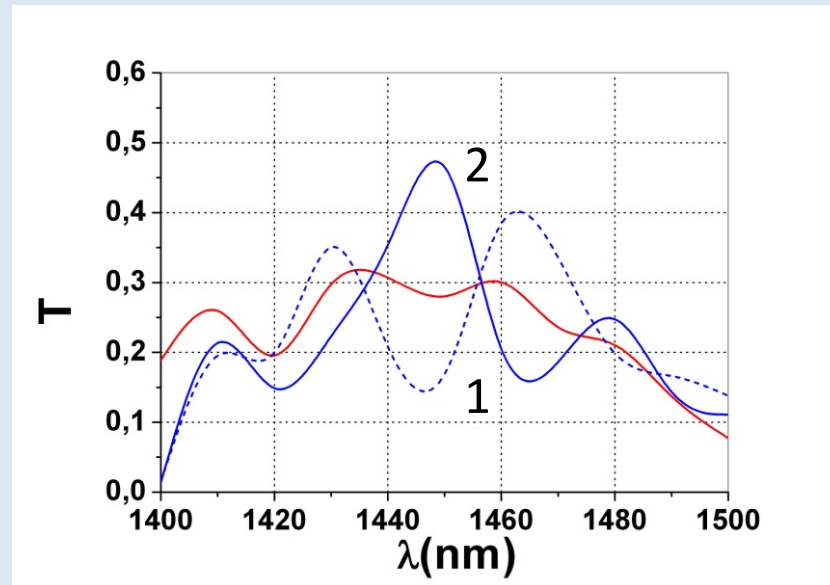


$$0,09 \leq r \leq 0,15 \mu m$$

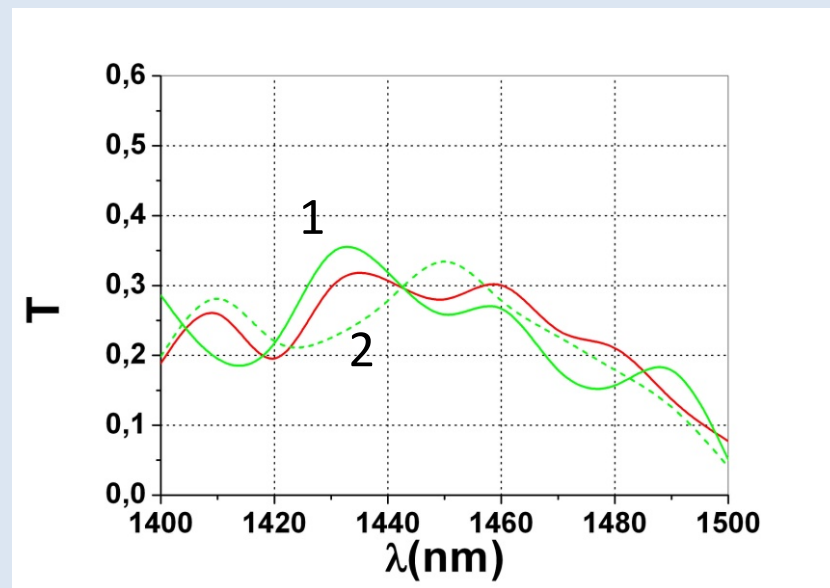


$$0,34 \leq f \leq 0,40$$

## Application of EMT



Distribution of radii for 2D photonic crystal



Distribution of filling factor for 2D photonic crystal



- ✓ Calculation of effective permittivity for nanocomposite glass
- ✓ Model of experimental setup by statistical analysis
- ✓ Design of waveguides using optical properties of structure
- ✓ Dependence on propagation EM waves in the different waveguides

Thank you for your attention